



Product Data Sheet

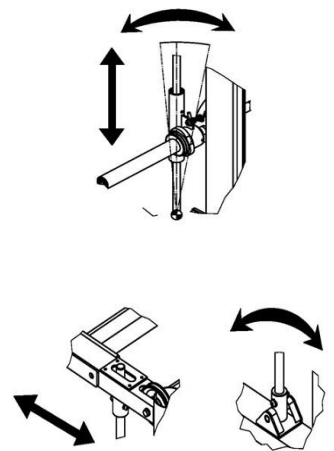
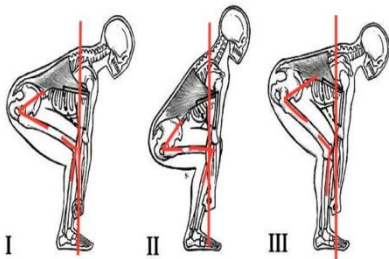
HSM smith machine

The Steelflex Hope line smith machine is the ideal partner for a total body workout in any space-challenged facility. Its 0 ~5 degrees reverse pitch and silky smooth linear bearing vertical carriage ensure freedom of biomechanically correct movement as you move safely and efficiently through routines that can include bench press, chest press, military press, squats, lunges, curls, shoulder shrugs and dozens of other muscle-massing exercises.

HSM allows any size user to a easy-start with an appropriate amount of resistance.



Pull out all the stops with the HSM Counter-Balanced Smith Machine!



(Steelflex 25Kg Colour Rubber Pro Olympic Weights shown in photo optional)

- **Mainframe.**

13Gauge 1.968x3.937 for oval tubing(50x100x2T)

12Gauge 1.968x3.937 for square tubing(50x100x2.5T)

- **Machine Weight.**

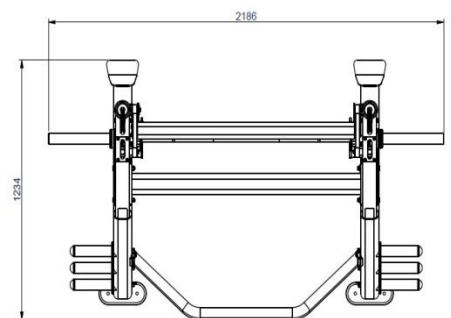
462 lbs (210kg)

- **Framework Finish.**

Electrostatically applied powder coat chip proof paint.

- **Frame construction/Welding.**

Continuous welds at all joints.



International Sales Office+

Tel: 886-2-2720-9980 Fax: 886-2-2722-9750

E-mail: joong@ms13.hinet.net